

**LEGEND**

- SILT FENCE
- SURFACE WATER FLOW
- EROSION MAT WISDOT URBAN, TYPE B
- EROSION MAT WISDOT CLASS II, TYPE C
- EROSION MAT WISDOT CLASS I, TYPE B
- EROSION MAT WISDOT CLASS III, TYPE C
- PIPE CHECK
- DITCH CHECK
- INLET PROTECTION (TYPE)
- TRACKING PAD

TYPE OF EROSION CONTROL	TYPE OF EMAT	SLOPE (IN DIRECTION OF FLOW)
DITCHES & SWALES	CLASS I, TYPE B	0%-6%
	CLASS III, TYPE C	6%-12%
	ANCHORED MULCH	0%-25%
SHEET FLOW	URBAN, TYPE B	25%-33%
	CLASS II, TYPE C	33%-50%
	CLASS II, TYPE C	ALL AREAS AROUND BASINS

- NOTES:**
- EROSION CONTROL FEATURES AS SHOWN IN THE PLANS ARE AT RECOMMENDED LOCATIONS. THE ENGINEER MAY MODIFY LOCATIONS AS NEEDED. ALL EROSION CONTROL MEASURES SHALL BE MAINTAINED UNTIL SUCH TIME AS THE ENGINEER DETERMINES THE MEASURE IS NO LONGER NECESSARY.
  - ALL DISTURBED AREAS TO BE RESTORED WITH SEED, FERTILIZER, AND MULCH UNLESS OTHERWISE NOTED. FINAL SEEDING TO BE #40. PROVIDE 2 LBS/1000 SF (0.044 TONS/ACRE). REFERENCE SECTION 630 OF THE WISCONSIN STANDARD SPECIFICATIONS FOR HIGHWAY AND STRUCTURE CONSTRUCTION.
  - MULCHING SHALL CONFORM TO SECTION 627 OF WISCONSIN STANDARD SPECIFICATIONS FOR HIGHWAY AND STRUCTURE CONSTRUCTION. MULCH SHALL HAVE A UNIFORM LOOSE DEPTH OF 0.5 TO 1.5 INCHES.
  - INSTALL SILT FENCING AS SHOWN ON PLANS FOLLOWING COMPLETION OF REMOVALS AND PRIOR TO LAND DISTURBING ACTIVITIES.
  - LOG-TYPE EROSION CONTROL MAY BE SUBSTITUTED FOR SILT FENCE IF THE SITE MEETS THE CRITERIA AND IS INSTALLED IN ACCORDANCE WITH WDNR TECHNICAL STANDARD 1071.
  - ANY ADDITIONAL CONSTRUCTION ENTRANCES REQUIRED SHALL RECEIVE TRACKING PAD STABILIZATION.
  - USE BIORETENTION AND/OR DRY BASIN AS A SEDIMENTATION BASIN UNTIL THE END OF MAJOR GRADING ACTIVITIES. REMOVE AND DISPOSE OF SEDIMENT BUILD-UP IN THE BASINS AS NEEDED AND BEFORE INSTALLATION OF ENGINEERED SOILS. SURROUND THE BASINS WITH SEDIMENT LOG ONCE ENGINEERED SOILS ARE INSTALLED AND DO NOT REMOVE UNTIL VEGETATION HAS BEEN ESTABLISHED.

NOT FOR CONSTRUCTION - NOT FOR CONSTRUCTION - NOT FOR CONSTRUCTION - NOT FOR CONSTRUCTION

**Batterman**  
engineers surveyors planners  
www.batterman.com

1040 N. Wisconsin St.  
Elkhorn, WI 53121  
(262) 379-2250

19 N. High Street  
Janesville, WI 53548  
(608) 743-9350

2857 Bartlett Drive  
Bellevue, WI 53511  
(608) 365-4464

ISSUANCE 9/5/2023

90% PLAN SET 10/24/2023

30% PLAN RESUBMITTAL #1 11/21/2023

STORM SEWER REVISIONS 11/21/2023

FINAL REVIEW 11/29/2023

DESIGNED BY: LH

DRAWN BY: SC/CMLC

CHECKED BY: TMLH

APPROVED BY: TN

PROJECT NO.: 34116

SHEET NO.: C4.05

EROSION CONTROL PLAN

BIRCHWOOD RESERVE SUBDIVISION  
B&L DEVELOPERS, LLC  
TOWN OF BURLINGTON  
RACINE COUNTY, WISCONSIN

34116 - C4.02 - EROSION CONTROL PLAN.DWG

NOTE: DIMENSIONAL DATA IS NOT TO BE OBTAINED BY SCALING ANY PORTION OF THIS DRAWING.



**LEGEND**

- SILT FENCE
- SURFACE WATER FLOW
- EROSION MAT WISDOT URBAN, TYPE B
- EROSION MAT WISDOT CLASS II, TYPE C
- EROSION MAT WISDOT CLASS I, TYPE B
- EROSION MAT WISDOT CLASS III, TYPE C
- PIPE CHECK
- DITCH CHECK
- INLET PROTECTION (TYPE)
- TRACKING PAD

TYPE OF EROSION CONTROL	TYPE OF EMAT	SLOPE (IN DIRECTION OF FLOW)
DITCHES & SWALES	CLASS I, TYPE B	0%-6%
	CLASS III, TYPE C	6%-12%
SHEET FLOW	ANCHORED MULCH	0%-25%
	URBAN, TYPE B	25%-33%
BASINS	CLASS II, TYPE C	33%-50%
	CLASS II, TYPE C	ALL AREAS AROUND BASINS

- NOTES:**
- EROSION CONTROL FEATURES AS SHOWN IN THE PLANS ARE AT RECOMMENDED LOCATIONS. THE ENGINEER MAY MODIFY LOCATIONS AS NEEDED. ALL EROSION CONTROL MEASURES SHALL BE MAINTAINED UNTIL SUCH TIME AS THE ENGINEER DETERMINES THE MEASURE IS NO LONGER NECESSARY.
  - ALL DISTURBED AREAS TO BE RESTORED WITH SEED, FERTILIZER, AND MULCH UNLESS OTHERWISE NOTED. FINAL SEEDING TO BE #40. PROVIDE 2 LBS/1000 SF (0.044 TONS/ACRE). REFERENCE SECTION 630 OF THE WISCONSIN STANDARD SPECIFICATIONS FOR HIGHWAY AND STRUCTURE CONSTRUCTION.
  - MULCHING SHALL CONFORM TO SECTION 627 OF WISCONSIN STANDARD SPECIFICATIONS FOR HIGHWAY AND STRUCTURE CONSTRUCTION. MULCH SHALL HAVE A UNIFORM LOOSE DEPTH OF 0.5 TO 1.5 INCHES.
  - INSTALL SILT FENCING AS SHOWN ON PLANS FOLLOWING COMPLETION OF REMOVALS AND PRIOR TO LAND DISTURBING ACTIVITIES.
  - LOG-TYPE EROSION CONTROL MAY BE SUBSTITUTED FOR SILT FENCE IF THE SITE MEETS THE CRITERIA AND IS INSTALLED IN ACCORDANCE WITH WDNr TECHNICAL STANDARD 1071.
  - ANY ADDITIONAL CONSTRUCTION ENTRANCES REQUIRED SHALL RECEIVE TRACKING PAD STABILIZATION.
  - USE BIORETENTION AND/OR DRY BASIN AS A SEDIMENTATION BASIN UNTIL THE END OF MAJOR GRADING ACTIVITIES. REMOVE AND DISPOSE OF SEDIMENT BUILD-UP IN THE BASINS AS NEEDED AND BEFORE INSTALLATION OF ENGINEERED SOILS. SURROUND THE BASINS WITH SEDIMENT LOG ONCE ENGINEERED SOILS ARE INSTALLED AND DO NOT REMOVE UNTIL VEGETATION HAS BEEN ESTABLISHED.

NOT FOR CONSTRUCTION - NOT FOR CONSTRUCTION - NOT FOR CONSTRUCTION

DESIGNED BY: LH

DRAWN BY: SC/CMLC

CHECKED BY: TMLH

APPROVED BY: TN

PROJECT NO.: 34116

SHEET NO. **C4.06**

**BIRCHWOOD RESERVE SUBDIVISION**  
**B&L DEVELOPERS, LLC**  
**TOWN OF BURLINGTON**  
**RACINE COUNTY, WISCONSIN**

34116 - C4.02 - EROSION CONTROL PLAN/DWG

ISSUANCE

90% PLAN SET 9/5/2023

90% PLAN RESUBMITTAL #1 10/24/2023

STORM SEWER REVISIONS 11/21/2023

FINAL REVIEW 11/29/2023

NOT FOR CONSTRUCTION

NOT FOR CONSTRUCTION

NOT FOR CONSTRUCTION

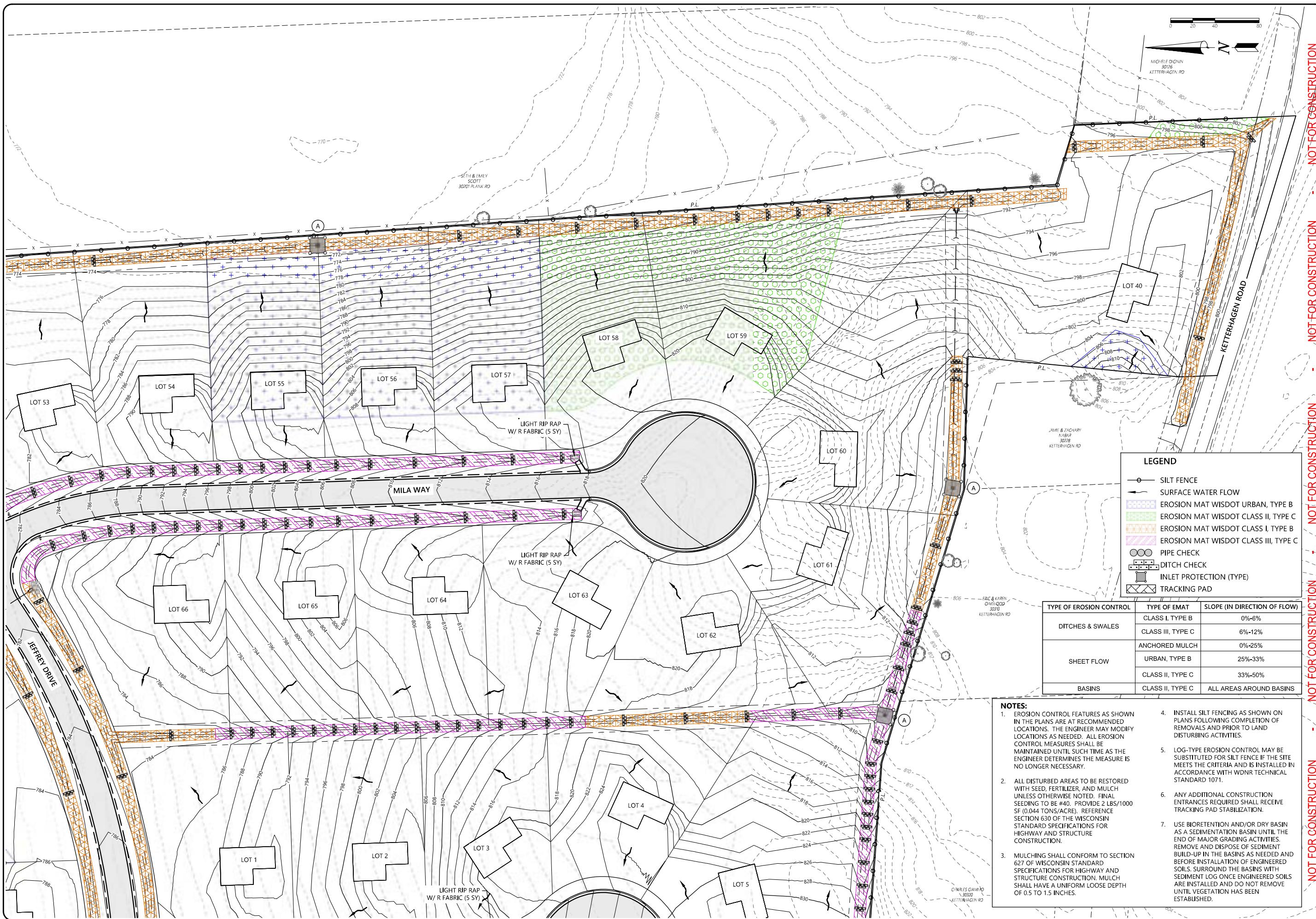
1040 N. Wisconsin St.  
 Elkhorn, WI 53121  
 (262) 379-2250

19 N. High Street  
 Janesville, WI 53548  
 (608) 743-9350

2857 Bartels Drive  
 Racine, WI 53411  
 (608) 365-4464

**Batterman**  
 engineers surveyors planners  
 www.batterman.com





**LEGEND**

- SILT FENCE
- SURFACE WATER FLOW
- EROSION MAT WISDOT CLASS II, TYPE C
- EROSION MAT WISDOT CLASS I, TYPE B
- EROSION MAT WISDOT CLASS III, TYPE C
- PIPE CHECK
- DITCH CHECK
- INLET PROTECTION (TYPE)
- TRACKING PAD

TYPE OF EROSION CONTROL	TYPE OF EMAT	SLOPE (IN DIRECTION OF FLOW)
DITCHES & SWALES	CLASS I, TYPE B	0%-6%
	CLASS III, TYPE C	6%-12%
SHEET FLOW	ANCHORED MULCH	0%-25%
	URBAN, TYPE B	25%-33%
BASINS	CLASS II, TYPE C	33%-50%
	CLASS II, TYPE C	ALL AREAS AROUND BASINS

- NOTES:**
- EROSION CONTROL FEATURES AS SHOWN IN THE PLANS ARE AT RECOMMENDED LOCATIONS. THE ENGINEER MAY MODIFY LOCATIONS AS NEEDED. ALL EROSION CONTROL MEASURES SHALL BE MAINTAINED UNTIL SUCH TIME AS THE ENGINEER DETERMINES THE MEASURE IS NO LONGER NECESSARY.
  - ALL DISTURBED AREAS TO BE RESTORED WITH SEED, FERTILIZER, AND MULCH UNLESS OTHERWISE NOTED. FINAL SEEDING TO BE #40. PROVIDE 2 LBS/1000 SF (0.044 TONS/ACRE). REFERENCE SECTION 630 OF THE WISCONSIN STANDARD SPECIFICATIONS FOR HIGHWAY AND STRUCTURE CONSTRUCTION.
  - MULCHING SHALL CONFORM TO SECTION 627 OF WISCONSIN STANDARD SPECIFICATIONS FOR HIGHWAY AND STRUCTURE CONSTRUCTION. MULCH SHALL HAVE A UNIFORM LOOSE DEPTH OF 0.5 TO 1.5 INCHES.
  - INSTALL SILT FENCING AS SHOWN ON PLANS FOLLOWING COMPLETION OF REMOVALS AND PRIOR TO LAND DISTURBING ACTIVITIES.
  - LOG-TYPE EROSION CONTROL MAY BE SUBSTITUTED FOR SILT FENCE IF THE SITE MEETS THE CRITERIA AND IS INSTALLED IN ACCORDANCE WITH WDNR TECHNICAL STANDARD 1071.
  - ANY ADDITIONAL CONSTRUCTION ENTRANCES REQUIRED SHALL RECEIVE TRACKING PAD STABILIZATION.
  - USE BIORETENTION AND/OR DRY BASIN AS A SEDIMENTATION BASIN UNTIL THE END OF MAJOR GRADING ACTIVITIES. REMOVE AND DISPOSE OF SEDIMENT BUILD-UP IN THE BASINS AS NEEDED AND BEFORE INSTALLATION OF ENGINEERED SOILS. SURROUND THE BASINS WITH SEDIMENT LOG ONCE ENGINEERED SOILS ARE INSTALLED AND DO NOT REMOVE UNTIL VEGETATION HAS BEEN ESTABLISHED.

NOT FOR CONSTRUCTION

**Batterman**  
engineers surveyors planners  
www.batterman.com

1040 N. Wisconsin St.  
Elkhorn, WI 53121  
(262) 379-2250

19 N. High Street  
Janesville, WI 53548  
(608) 743-9350

2857 Bartlett Drive  
Baldwin, WI 53511  
(608) 365-4464

ISSUANCE 9/5/2023

90% PLAN SET

30% PLAN RESUBMITTAL #1 10/24/2023

STORM SEWER REVISIONS 11/21/2023

FINAL REVIEW 11/29/2023

EROSION CONTROL PLAN

BIRCHWOOD RESERVE SUBDIVISION  
B&L DEVELOPERS, LLC  
TOWN OF BURLINGTON  
RACINE COUNTY, WISCONSIN

34716 - C4.02 - EROSION CONTROL PLAN/DWG

DESIGNED BY: LH

DRAWN BY: SC/CMLC

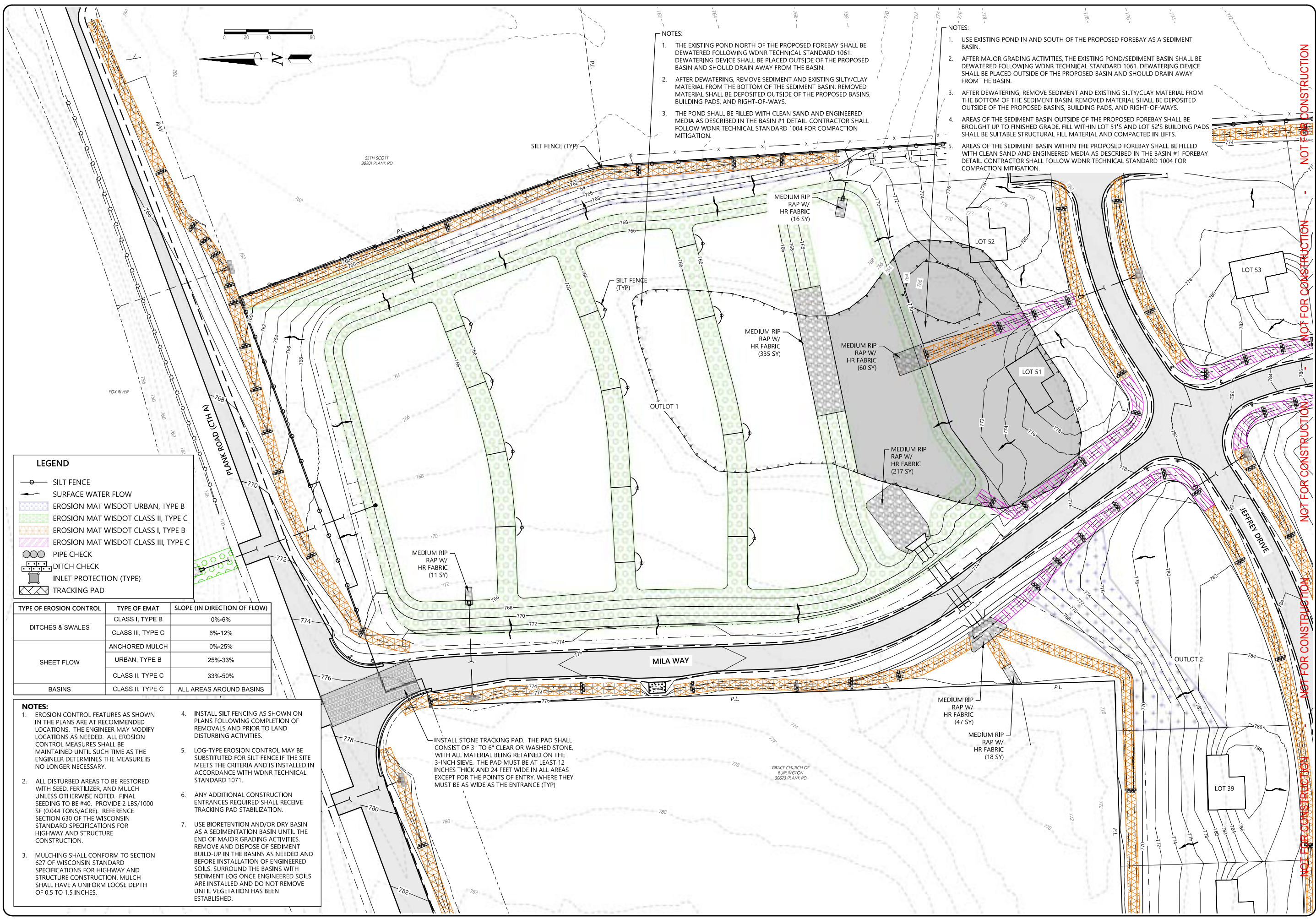
CHECKED BY: TMLH

APPROVED BY: TN

PROJECT NO: 34716

SHEET NO.

**C4.08**



**NOTES:**

1. THE EXISTING POND NORTH OF THE PROPOSED FOREBAY SHALL BE DEWATERED FOLLOWING WDNr TECHNICAL STANDARD 1061. DEWATERING DEVICE SHALL BE PLACED OUTSIDE OF THE PROPOSED BASIN AND SHOULD DRAIN AWAY FROM THE BASIN.
2. AFTER DEWATERING, REMOVE SEDIMENT AND EXISTING SILTY/CLAY MATERIAL FROM THE BOTTOM OF THE SEDIMENT BASIN. REMOVED MATERIAL SHALL BE DEPOSITED OUTSIDE OF THE PROPOSED BASINS, BUILDING PADS, AND RIGHT-OF-WAYS.
3. THE POND SHALL BE FILLED WITH CLEAN SAND AND ENGINEERED MEDIA AS DESCRIBED IN THE BASIN #1 DETAIL. CONTRACTOR SHALL FOLLOW WDNr TECHNICAL STANDARD 1004 FOR COMPACTION MITIGATION.

**NOTES:**

1. USE EXISTING POND IN AND SOUTH OF THE PROPOSED FOREBAY AS A SEDIMENT BASIN.
2. AFTER MAJOR GRADING ACTIVITIES, THE EXISTING POND/SEDIMENT BASIN SHALL BE DEWATERED FOLLOWING WDNr TECHNICAL STANDARD 1061. DEWATERING DEVICE SHALL BE PLACED OUTSIDE OF THE PROPOSED BASIN AND SHOULD DRAIN AWAY FROM THE BASIN.
3. AFTER DEWATERING, REMOVE SEDIMENT AND EXISTING SILTY/CLAY MATERIAL FROM THE BOTTOM OF THE SEDIMENT BASIN. REMOVED MATERIAL SHALL BE DEPOSITED OUTSIDE OF THE PROPOSED BASINS, BUILDING PADS, AND RIGHT-OF-WAYS.
4. AREAS OF THE SEDIMENT BASIN OUTSIDE OF THE PROPOSED FOREBAY SHALL BE BROUGHT UP TO FINISHED GRADE. FILL WITHIN LOT 51'S AND LOT 52'S BUILDING PADS SHALL BE SUITABLE STRUCTURAL FILL MATERIAL AND COMPACTED IN LIFTS.
5. AREAS OF THE SEDIMENT BASIN WITHIN THE PROPOSED FOREBAY SHALL BE FILLED WITH CLEAN SAND AND ENGINEERED MEDIA AS DESCRIBED IN THE BASIN #1 FOREBAY DETAIL. CONTRACTOR SHALL FOLLOW WDNr TECHNICAL STANDARD 1004 FOR COMPACTION MITIGATION.

**LEGEND**

- SILT FENCE
- SURFACE WATER FLOW
- ▨ EROSION MAT WISDOT URBAN, TYPE B
- ▨ EROSION MAT WISDOT CLASS II, TYPE C
- ▨ EROSION MAT WISDOT CLASS I, TYPE B
- ▨ EROSION MAT WISDOT CLASS III, TYPE C
- PIPE CHECK
- ▨ DITCH CHECK
- ▨ INLET PROTECTION (TYPE)
- ▨ TRACKING PAD

TYPE OF EROSION CONTROL	TYPE OF EMAT	SLOPE (IN DIRECTION OF FLOW)
DITCHES & SWALES	CLASS I, TYPE B	0%-6%
	CLASS III, TYPE C	6%-12%
SHEET FLOW	ANCHORED MULCH	0%-25%
	URBAN, TYPE B	25%-33%
BASINS	CLASS II, TYPE C	33%-50%
	CLASS II, TYPE C	ALL AREAS AROUND BASINS

**NOTES:**

1. EROSION CONTROL FEATURES AS SHOWN IN THE PLANS ARE AT RECOMMENDED LOCATIONS. THE ENGINEER MAY MODIFY LOCATIONS AS NEEDED. ALL EROSION CONTROL MEASURES SHALL BE MAINTAINED UNTIL SUCH TIME AS THE ENGINEER DETERMINES THE MEASURE IS NO LONGER NECESSARY.
2. ALL DISTURBED AREAS TO BE RESTORED WITH SEED, FERTILIZER, AND MULCH UNLESS OTHERWISE NOTED. FINAL SEEDING TO BE #40. PROVIDE 2 LBS/1000 SF (0.044 TONS/ACRE). REFERENCE SECTION 630 OF THE WISCONSIN STANDARD SPECIFICATIONS FOR HIGHWAY AND STRUCTURE CONSTRUCTION.
3. MULCHING SHALL CONFORM TO SECTION 627 OF WISCONSIN STANDARD SPECIFICATIONS FOR HIGHWAY AND STRUCTURE CONSTRUCTION. MULCH SHALL HAVE A UNIFORM LOOSE DEPTH OF 0.5 TO 1.5 INCHES.
4. INSTALL SILT FENCING AS SHOWN ON PLANS FOLLOWING COMPLETION OF REMOVALS AND PRIOR TO LAND DISTURBING ACTIVITIES.
5. LOG-TYPE EROSION CONTROL MAY BE SUBSTITUTED FOR SILT FENCE IF THE SITE MEETS THE CRITERIA AND IS INSTALLED IN ACCORDANCE WITH WDNr TECHNICAL STANDARD 1071.
6. ANY ADDITIONAL CONSTRUCTION ENTRANCES REQUIRED SHALL RECEIVE TRACKING PAD STABILIZATION.
7. USE BIORETENTION AND/OR DRY BASIN AS A SEDIMENTATION BASIN UNTIL THE END OF MAJOR GRADING ACTIVITIES. REMOVE AND DISPOSE OF SEDIMENT BUILD-UP IN THE BASINS AS NEEDED AND BEFORE INSTALLATION OF ENGINEERED SOILS. SURROUND THE BASINS WITH SEDIMENT LOG ONCE ENGINEERED SOILS ARE INSTALLED AND DO NOT REMOVE UNTIL VEGETATION HAS BEEN ESTABLISHED.

INSTALL STONE TRACKING PAD. THE PAD SHALL CONSIST OF 3" TO 6" CLEAR OR WASHED STONE, WITH ALL MATERIAL BEING RETAINED ON THE 3-INCH SIEVE. THE PAD MUST BE AT LEAST 12 INCHES THICK AND 24 FEET WIDE IN ALL AREAS EXCEPT FOR THE POINTS OF ENTRY, WHERE THEY MUST BE AS WIDE AS THE ENTRANCE (TYP)

NOT FOR CONSTRUCTION - NOT FOR CONSTRUCTION - NOT FOR CONSTRUCTION - NOT FOR CONSTRUCTION - NOT FOR CONSTRUCTION



**Batterman**  
engineers surveyors planners  
www.batterman.com

1040 N. Wisconsin St. Ekhorn, WI 53121 (262) 378-2250	19 N. High Street Janesville, WI 53148 (608) 743-9350	2057 Barlett Drive Baldwin, WI 53111 (608) 365-4464
ISSUANCE	9/5/2023	
90% PLAN SET	10/24/2023	
30% PLAN RESUBMITTAL #1	11/21/2023	
STORM SEWER REVISIONS	11/29/2023	
FINAL REVIEW		
	X	X

EROSION CONTROL PLAN

NOTE: DIMENSIONAL DATA IS NOT TO BE OBTAINED BY SCALING ANY PORTION OF THIS DRAWING

BIRCHWOOD RESERVE SUBDIVISION  
B&L DEVELOPERS, LLC  
TOWN OF BURLINGTON  
RACINE COUNTY, WISCONSIN

34116 - C4.02 - EROSION CONTROL PLAN.DWG

DESIGNED BY:	LH	34116
DRAWN BY:	SC/CMLC	
CHECKED BY:	TN/HLH	
APPROVED BY:	TN	
PROJECT NO.:	34116	

SHEET NO.  
**C4.09**